

5,000 SF COMMERCIAL BUILDING 222 & 236 OLD CHATHAM ROAD, DENNIS, MA



Building Size: 5,000 SF Steel Frame Building.
1,000 SF +/- Office Space.
4,000 SF +/- Open Area.

Year Built: 1976.

Lot Size: 1.8 Acres Total
Land Zoned Extensive Business -1.31 Acres.
Land Zoned R-40 - .49 Acres.
Land is located in Zone II, Ground Water Recharge

Roof: Metal

HVAC: 100% in Office Area, Hot Air Heat in Open Area.

Clear Height: 14 Feet

Bathrooms: Three.

Utilities: Water, On Site Septic, Oil Heat, Electric.

Real Estate Taxes: FY 2010 Taxes \$3,646.



For Sale at \$550,000 / \$110 SF
Contact: Michael Giancola, SIOR
508.833.5050

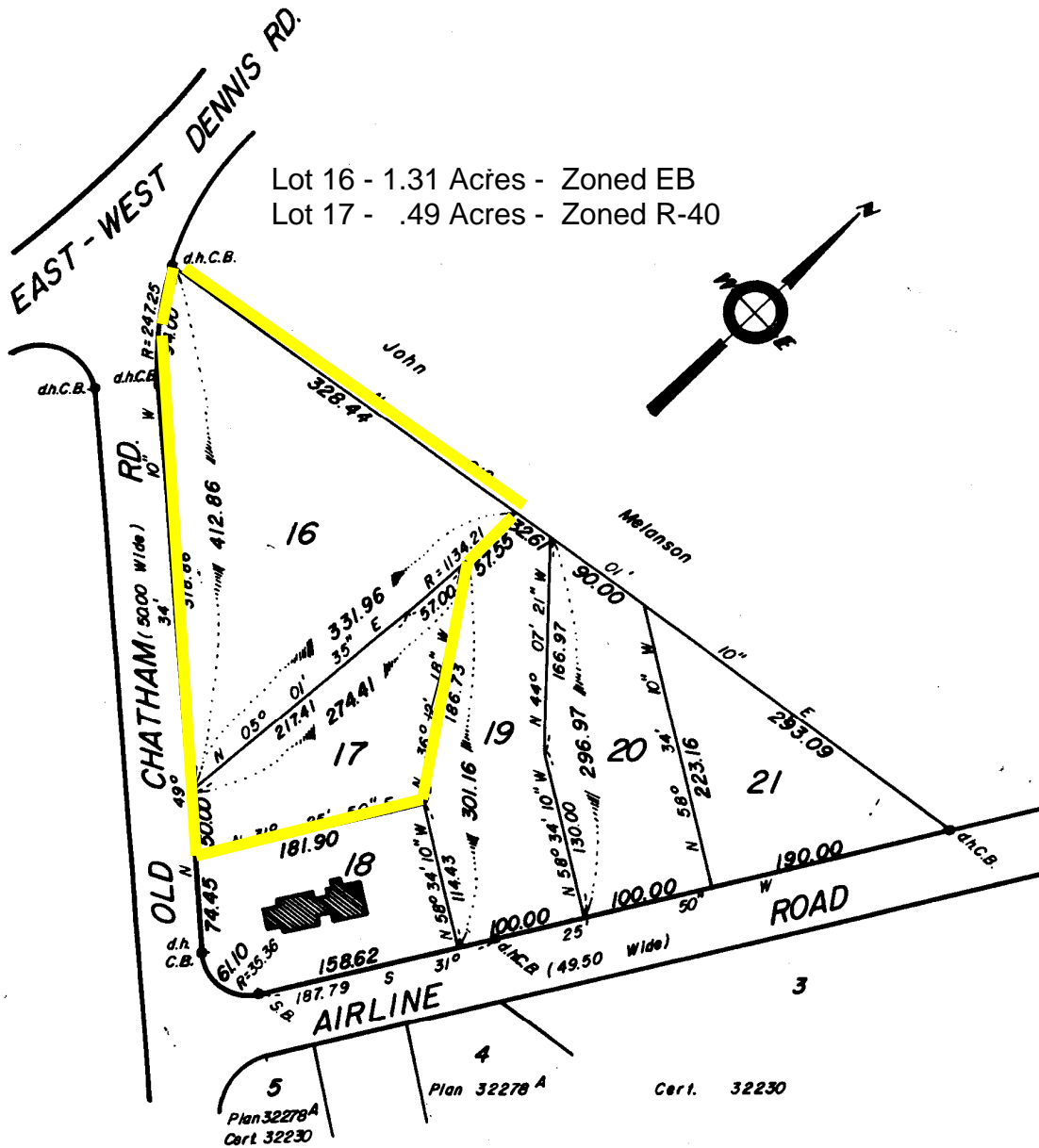
Southeast Commercial Real Estate, Inc.
www.southeastcommercialre.com

SUBDIVISION PLAN OF LAND IN DENNIS

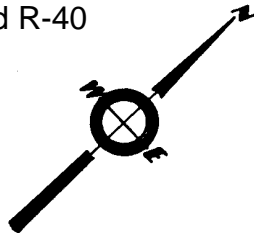
32278^C

S. R. Sweetser, Surveyor

October 12, 1976



Lot 16 - 1.31 Acres - Zoned EB
 Lot 17 - .49 Acres - Zoned R-40



Subdivision of Lots 7 thru 15
 Shown on Plan 32278^B
 Filed with Cert. of Title No. 32230
 Registry District of Barnstable County

Separate certificates of title may be issued for land
 shown hereon as Lots 16 thru 21
 By the Court.

MAR. 21, 1977. *Margaret M. Daly*
 Reforder.

Copy of part of plan
 filed in
LAND REGISTRATION OFFICE
 MAR. 3, 1977
 Scale of this plan 100 feet to an inch
 R.L. Woodbury, Engineer for Court