

10.4 Acres Automotive / Retail Site Available Routes 24 & 44 Raynham, MA



Location: Route 44, Adjacent to Lowe's Home Improvement Center. Diagonally across from the new Wal-Mart Super-Center, in Raynham, MA.

Permitting: Site is Presently MEPA Permitted for 82,000 SF of Office/ R&D, Modifications to Permit will be Required.

Land Area: 18.9 +/- acres, with 10.4 +/- Acres of Upland.

Utilities: Municipal Water & Sewer, Natural Gas, Electric, All Located on the South side of Route 44.

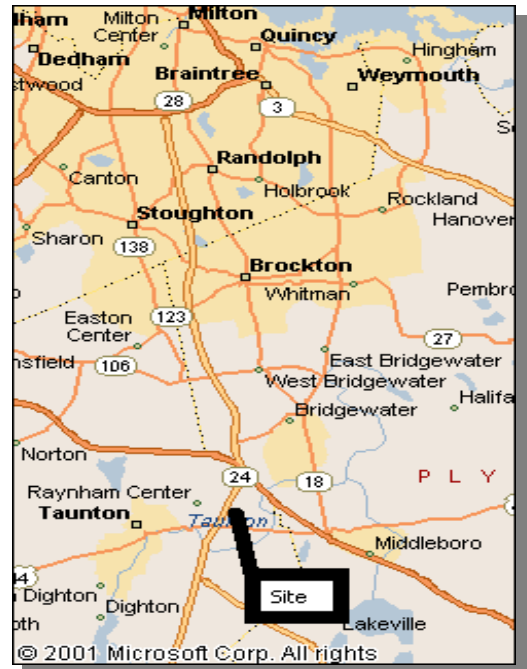
Assessor Information: Town of Raynham, Tax Map 15, Parcel 148B.

Frontage: 274' +/- of Upland on Route 44.

Zoning: Business District, Retail and Automotive Uses are Permitted.

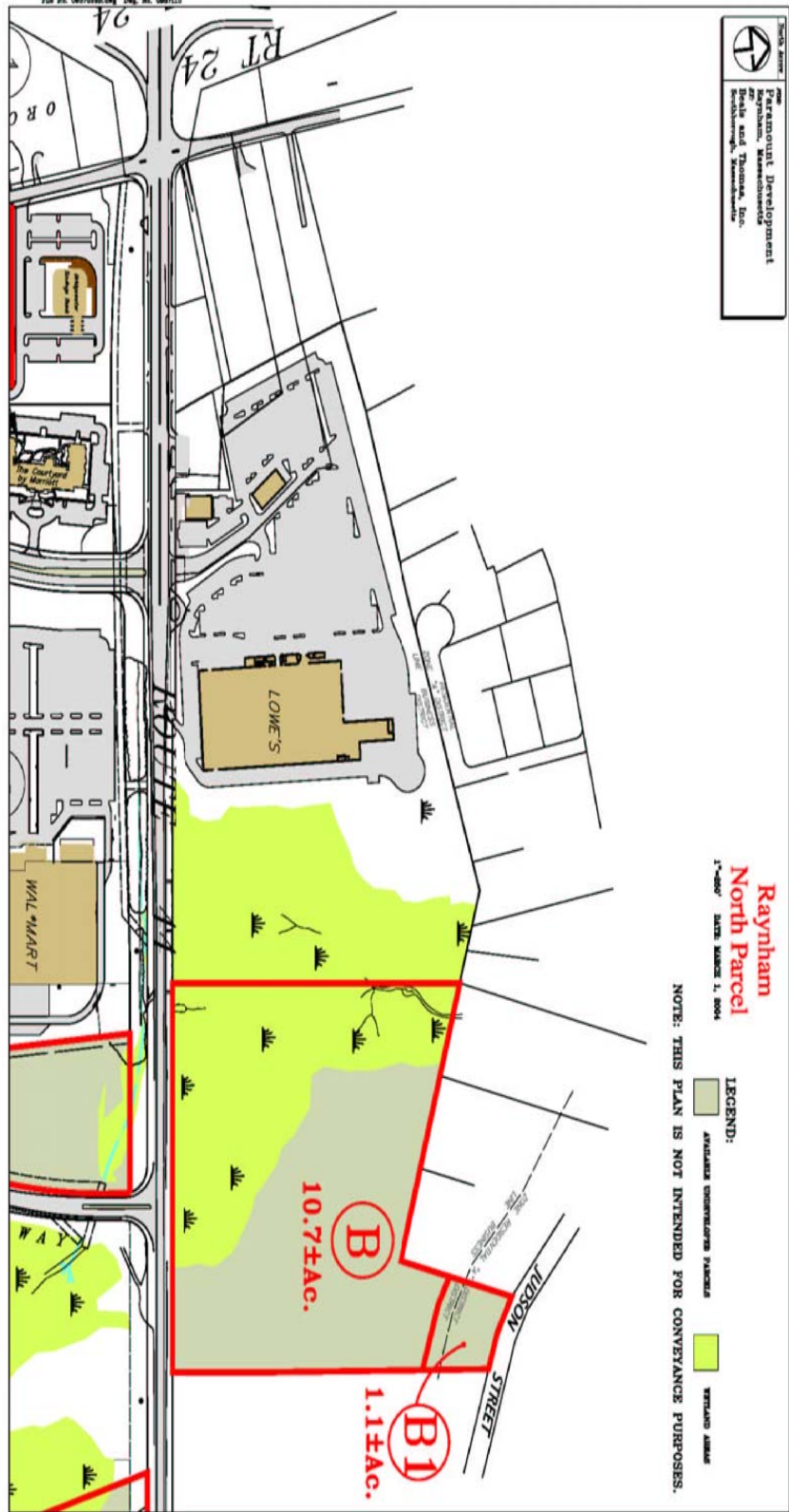
For Sale at \$1,390,000

Contact: Michael Giancola, SIOR
mgiancola@ccim.net
508.833.5050



Southeast Commercial Real Estate, Inc.
www.southeastcommercialre.com





Lot B is 10.4 +/- Acres.
 Lot B-1 is to be Retained by Seller.